

TOMMA

FOLDING SLIDING STACKING SOLUTIONS

FOLD 60

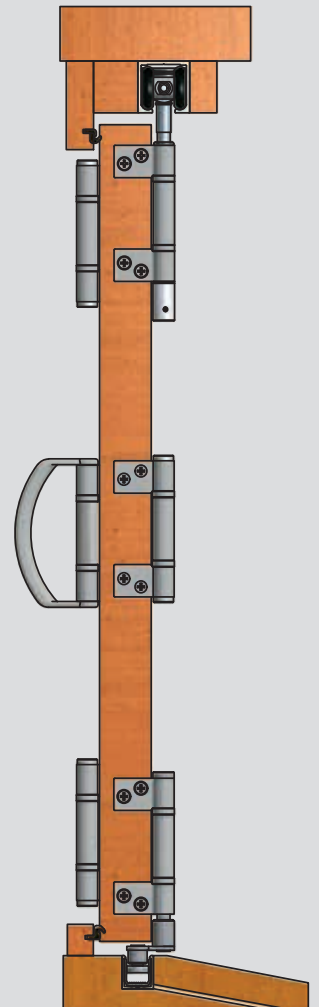


60KG CONSEALED BI -FOLDING SYSTEM

SPECIFICATIONS

- Equal Size Panels
- Max Panel Weight 60kg
- Max Panel Height 3000mm*
- Max Panel Width 1000mm
- Min Panel Thickness 38mm
- Easy adjustment
- "One Pass" router for Flush Bolts
- Patented system - reduces inventory and improves weather sealing
- Heavy duty machined hinges
- Exclusive 10 year warranty

*Panels exceeding 2700 recommended use of a pivot snubber



TOMMA

FOLDING

SLIDING

STACKING

SOLUTIONS

A MAMMOTH INDUSTRIES COMPANY

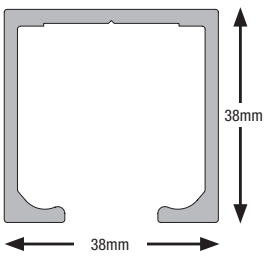
Mammoth Industries is a privately owned company with our origins in Melbourne Australia. Our company is a leading producer of Rolling, Folding and Stacking systems throughout a number of different industries across the globe. The key to our success is our ability to listen to our client's needs and take an innovative approach to product development, through to engineering and then on to manufacturing. This approach gives our client's a finished product that is easy to use, well-functioning and of a superior quality.

Craig Lang, Managing Director and Founder of Mammoth Industries says, "Having worked in the industry for many years I could see the way that manufacturing was rapidly changing and realised early on the only way to keep in front, and offer our client's the best solutions would be to partner with some of the leading manufacturing facilities around the world. Each of these companies have their own unique capabilities allowing us to access all the latest machinery and manufacturing methods available today. This manufacturing principle combined with our leading engineering and design team enables us to offer our clients the best solutions for their applications and not just the best solution based upon what products are available. I'm proud of the fact we have built an enviable reputation for quality and reliability and now have established long term clients throughout Australia, North America, Europe and Asia. We believe by working with our company and utilising our 100 plus years of design and industry experience we are able to offer your company a competitive edge in your chosen working environment. We listen, understand your needs, offer solutions and become a partner in helping your business to grow."

Mammoth Industries will "make your ideas move".

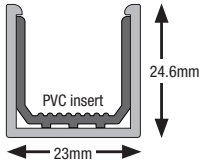


TRACK



Aluminium Top Track Pre-drilled and countersunk

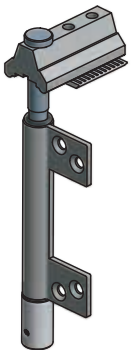
PART No.	DESCRIPTION	LENGTH	FINISH
60-TT3000-CA	Aluminium Top Track	3000mm	Clear Anodised
60-TT4000-CA	Aluminium Top Track	4000mm	Clear Anodised
60-TT6000-CA	Aluminium Top Track	6000mm	Clear Anodised



Aluminium Concealed Bottom Track Pre-drilled and countersunk

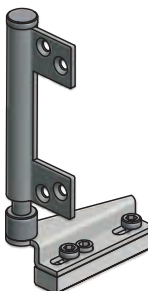
PART No.	DESCRIPTION	LENGTH	FINISH
62-BT3000-CA	Aluminium Bottom Track	3000mm	Clear Anodised Black PVC Insert
62-BT4000-CA	Aluminium Bottom Track	4000mm	Clear Anodised Black PVC Insert
62-BT6000-CA	Aluminium Bottom Track	6000mm	Clear Anodised Black PVC Insert

PIVOT SETS



Left Hand Pivot Set

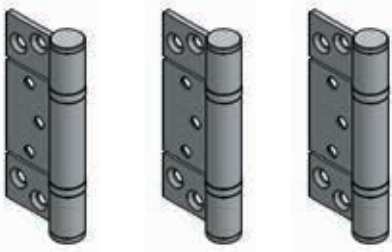
PART No.	DESCRIPTION	FINISH
62-101-PSS	Pivot Set LH	Polished Stainless
62-101-SS	Pivot Set LH	Satin Stainless



Right Hand Pivot Set

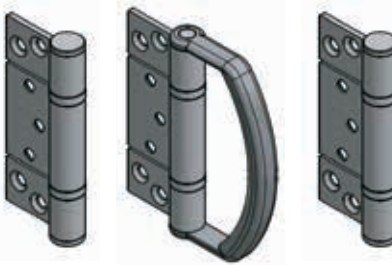
PART No.	DESCRIPTION	FINISH
62-103-PSS	Pivot Set RH	Polished Stainless
62-103-SS	Pivot Set RH	Satin Stainless

HINGE SETS



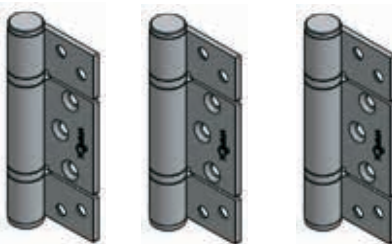
Hinge Set Without Handle

PART No.	DESCRIPTION	FINISH
60-300-PSS	Hinge Set	Polished Stainless
60-300-SS	Hinge Set	Satin Stainless



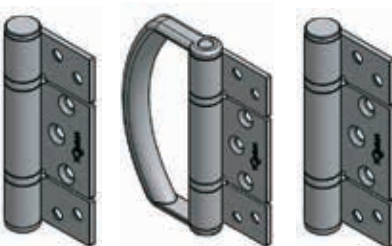
Hinge Set With Handle

PART No.	DESCRIPTION	FINISH
60-320-PSS	Hinge Set with handle	Polished Stainless
60-320-SS	Hinge Set with handle	Satin Stainless



Offset Hinge Set Without Handle

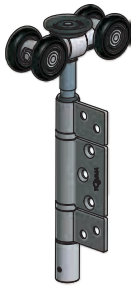
PART No.	DESCRIPTION	FINISH
60-350-PSS	Hinge Set	Polished Stainless
60-350-SS	Hinge Set	Satin Stainless



Offset Hinge Set With Handle

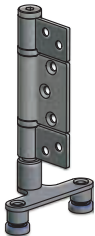
PART No.	DESCRIPTION	FINISH
60-370-PSS	Hinge Set with handle	Polished Stainless
60-370-SS	Hinge Set with handle	Satin Stainless

TROLLEY SETS

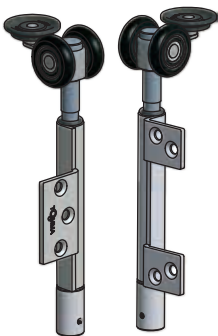


Intermediate Carrier Set

PART No.	DESCRIPTION	FINISH
62-400-PSS	Intermediate Carrier Set	Polished Stainless
62-400-SS	Intermediate Carrier Set	Satin Stainless

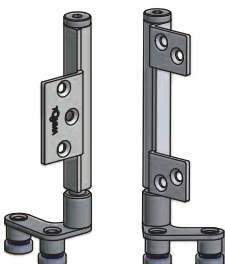


Right hand shown



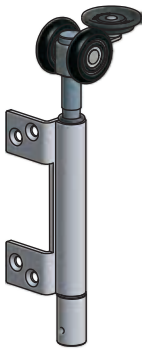
Meeting Carrier Set

PART No.	DESCRIPTION	FINISH
62-299-PSS	Meeting Carrier Set	Polished Stainless
62-299-SS	Meeting Carrier Set	Satin Stainless



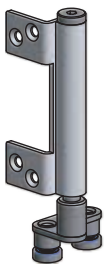
Right hand shown

TROLLEY SETS



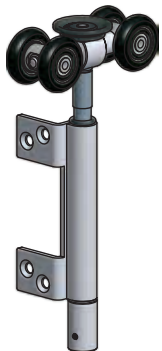
Offset End Carrier Set

PART No.	DESCRIPTION	FINISH
LEFT HAND		
62-291-PSS	Carrier Set LH	Polished Stainless
62-291-SS	Carrier Set LH	Satin Stainless



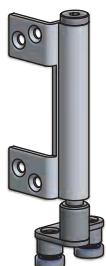
RIGHT HAND		
62-293-PSS	Carrier Set RH	Polished Stainless
62-293-SS	Carrier Set RH	Satin Stainless

Left hand shown



4 Wheel Offset End Carrier Set

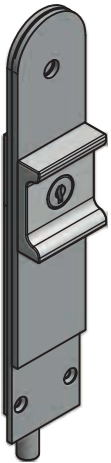
PART No.	DESCRIPTION	FINISH
LEFT HAND		
62-491-PSS	4 Wheel Offset End Carrier Set LH	Polished Stainless
62-491-SS	4 Wheel Offset End Carrier Set LH	Satin Stainless



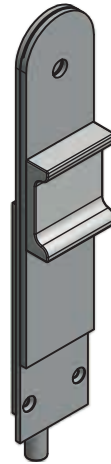
RIGHT HAND		
62-493-PSS	4 Wheel Offset End Carrier Set RH	Polished Stainless
62-493-SS	4 Wheel Offset End Carrier Set RH	Satin Stainless

Left hand shown

FLUSH BOLTS - outward opening doors

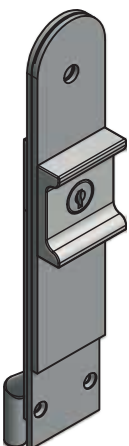


LOCKING	SIZE	FINISH
62-FB200L-PSS	200mm	Polished Stainless
62-FB200L-SS	200mm	Satin Stainless
62-FB400L-PSS	400mm	Polished Stainless
62-FB400L-SS	400mm	Satin Stainless
62-FB600L-PSS	600mm	Polished Stainless
62-FB600L-SS	600mm	Satin Stainless

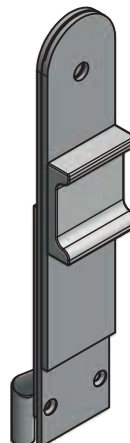


NON-LOCKING	SIZE	FINISH
62-FB200NL-PSS	200mm	Polished Stainless
62-FB200NL-SS	200mm	Satin Stainless
62-FB400NL-PSS	400mm	Polished Stainless
62-FB400NL-SS	400mm	Satin Stainless
62-FB600NL-PSS	600mm	Polished Stainless
62-FB600NL-SS	600mm	Satin Stainless

FLUSH BOLTS - inward opening doors

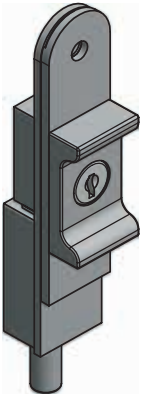


LOCKING	SIZE	FINISH
62-FB201L-PSS	200mm	Polished Stainless
62-FB201L-SS	200mm	Satin Stainless
62-FB401L-PSS	400mm	Polished Stainless
62-FB401L-SS	400mm	Satin Stainless
62-FB601L-PSS	600mm	Polished Stainless
62-FB601L-SS	600mm	Satin Stainless

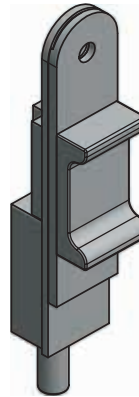


NON-LOCKING	SIZE	FINISH
62-FB201NL-PSS	200mm	Polished Stainless
62-FB201NL-SS	200mm	Satin Stainless
62-FB401NL-PSS	400mm	Polished Stainless
62-FB401NL-SS	400mm	Satin Stainless
62-FB601NL-PSS	600mm	Polished Stainless
62-FB601NL-SS	600mm	Satin Stainless

SERVERY FLUSH BOLTS

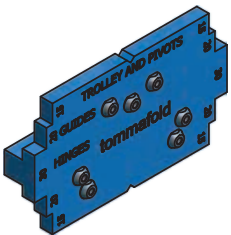


LOCKING	SIZE	FINISH
62-FB120L-SS	120mm	Satin Stainless
62-FB300L-SS	300mm	Satin Stainless



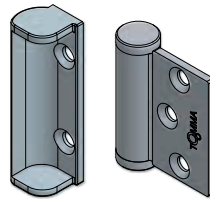
NON-LOCKING	SIZE	FINISH
62-FB120NL-PSS	120mm	Satin Stainless

ACCESSORIES



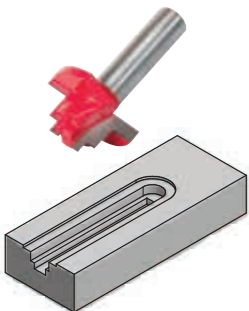
Hinge Drill Jig

PART No.	MATERIAL	FINISH
60-DJ100	Cast Poly	Blue



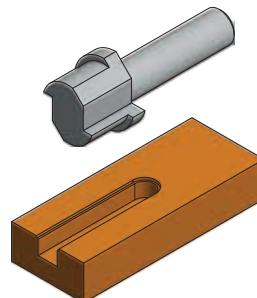
Security Snubber

PART No.	FINISH
62-SN00-SS	Satin Stainless



Flush Bolt Router Cutter

PART No.	HAND
60-RT003	Right



Servery Flush Bolt Router Cutter

PART No.	HAND
60-RT120	Right